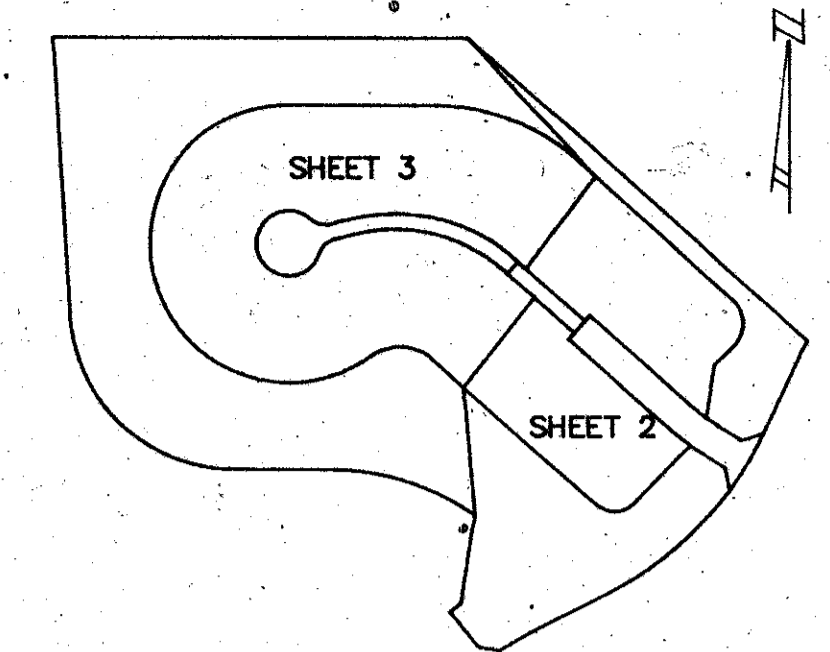


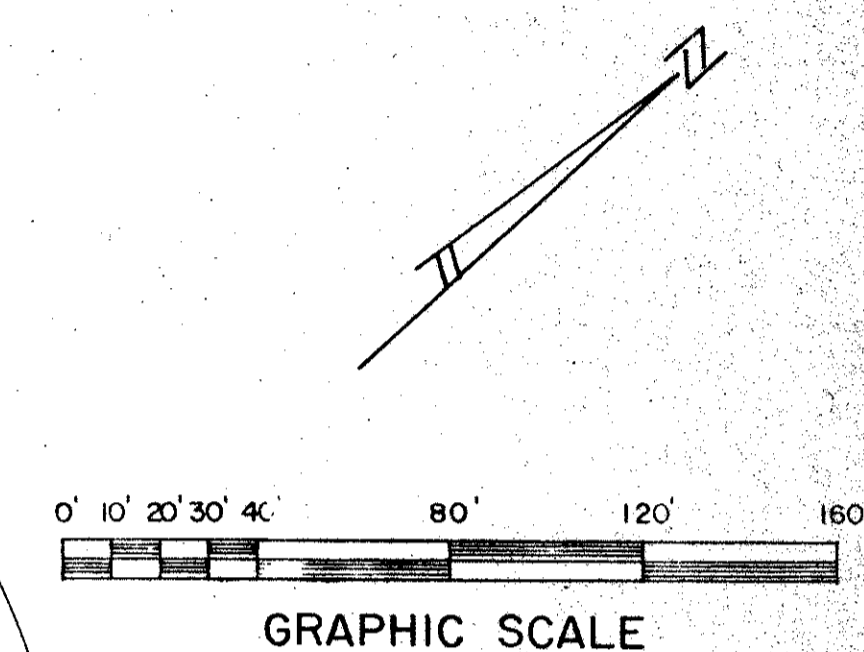
# EQUESTRIAN CLUB ESTATES - PLAT NO. 3 OF PALM BEACH POLO AND COUNTRY CLUB WELLINGTON COUNTRYPLACE - P.U.D.

IN PART OF SECTION 20, TOWNSHIP 44 SOUTH, RANGE 41 EAST  
PALM BEACH COUNTY, FLORIDA  
SHEET 2 OF 3 SHEETS  
MAY 1989

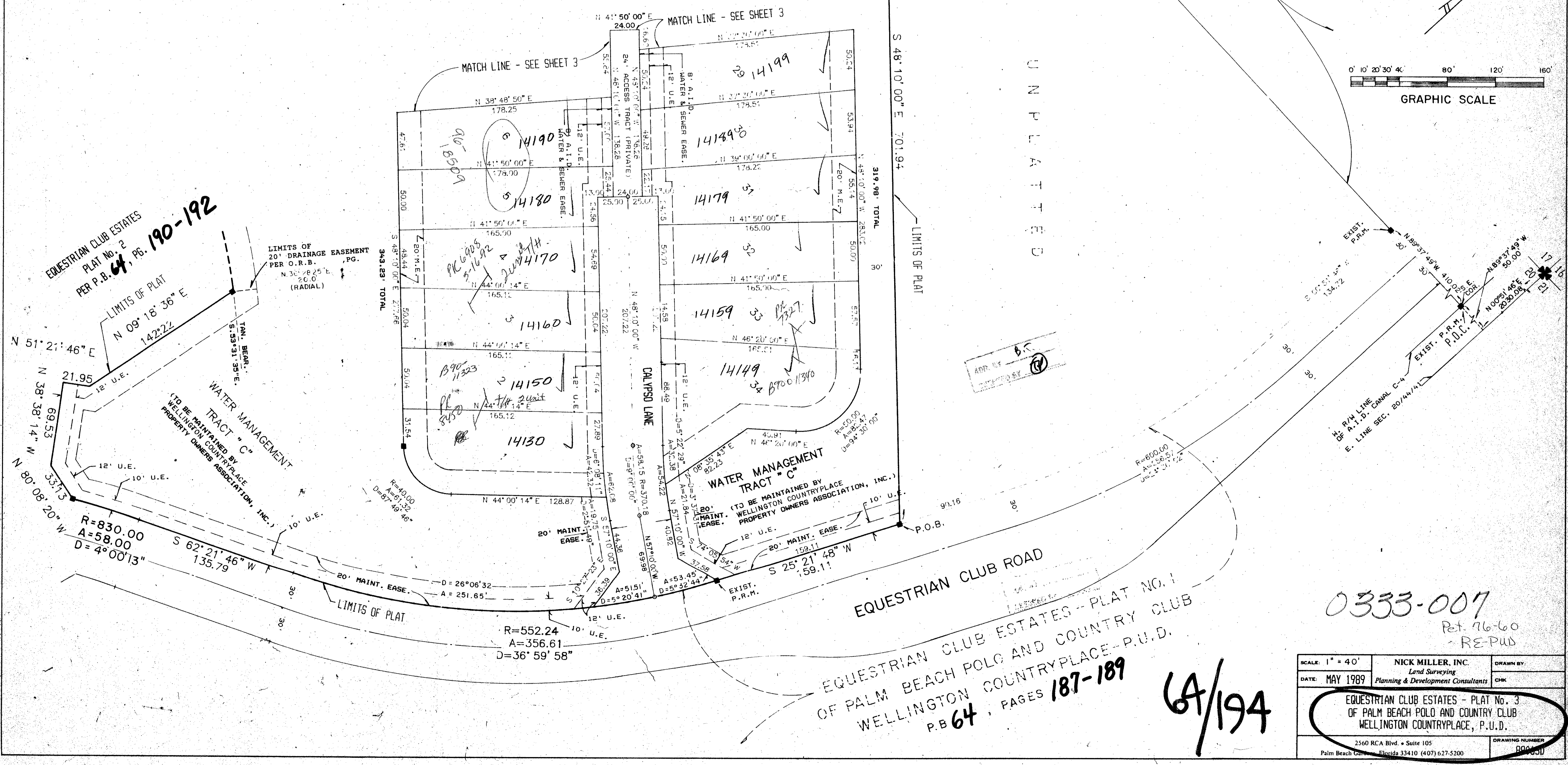


SHEET INDEX MAP

PALM BEACH POLO EQUESTRIAN CLUB PLAT No. 3  
OF WELLINGTON COUNTRYPLACE, P.U.D.  
P.B. 61, PGS. 114 & 115



EQUESTRIAN CLUB ESTATES  
PLAT No. 2  
PER P.B. 64, PGS. 190-192



UNPLATTED

APR 17 1989

0333-007  
Ret. 76-60  
-RE-PUB

EQUESTRIAN CLUB ESTATES - PLAT NO. 1  
OF PALM BEACH POLO AND COUNTRY CLUB  
WELLINGTON COUNTRYPLACE - P.U.D.  
P.B. 64, PAGES 187-189

64/194

|  |   |                          |
|--|---|--------------------------|
| SCALE: 1" = 40'  | NICK MILLER, INC.<br>Land Surveying<br>Planning & Development Consultants | DRAWN BY:<br>CHK         |
| DATE: MAY 1989   |   |                          |
| EQUESTRIAN CLUB ESTATES - PLAT No. 3<br>OF PALM BEACH POLO AND COUNTRY CLUB<br>WELLINGTON COUNTRYPLACE, P.U.D. |   |                          |
| 2560 RCA Blvd. • Suite 105<br>Palm Beach Gardens, Florida 33410 (407) 627-5200                                 |   | DRAWING NUMBER<br>B00050 |

SUBDIVISION \* EQUESTRIAN CLUB ESTATES PLAT  
BOOK 64 FLOOD MAP # 1008  
PAGE 194  
QUAD # 78 ZONING P.E.  
SE 76-60 ZIP CODE 33414  
PUD NAME WELLINGTON COUNTRYPLACE P.U.D.

821-291